

# Visioline® VL 650 - Quantirides - Assessing the Skin Makro Relief by Replica and Oblique Lighting

## Fields of Application

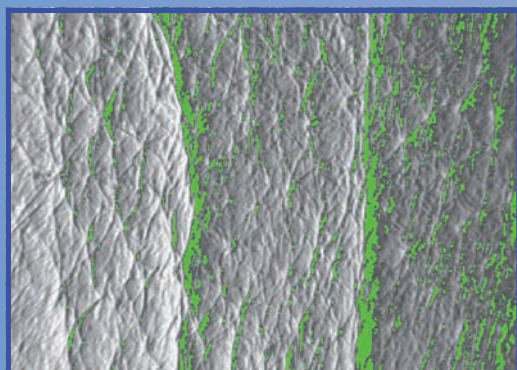
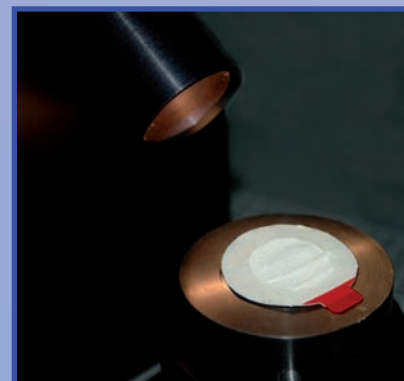
This method has been scientifically acknowledged and established for many years to analyse objectively the deeper lines and macro wrinkles such as crow feet. This is especially interesting for claim support of anti-aging and anti-wrinkle products.

## Measurement principle

The measurement is based on shadows on a silicon replica. The replica which represents a negative of the skin, is illuminated uniformly with a defined light source mounted in a specified angle.

The shadows visible on the replica created by the oblique light are captured with a high resolution, quick FireWire camera, which is mounted vertically to the replica.

A very sophisticated software analyses different characteristics of the wrinkle in real length and depth (in mm) and a shape factor.



## Benefits of the System:

The system is very economic in regards to cost and time and staff needed for the analysis.

The very easy handling does not require a high specialisation.

The replica can be stored for documentation.

Making of the replica and analysis must not necessarily be performed at the same time. The replica can be analysed at any time when all replica for one study have been collected.

## Features of the Visioline® software:

It is very reproducible and accurate. To analyse the same area of before and after treatment a mask function can overlay the images of the replica over an already previously taken replica to match the same position.

Four images can be shown on the screen at the same time.

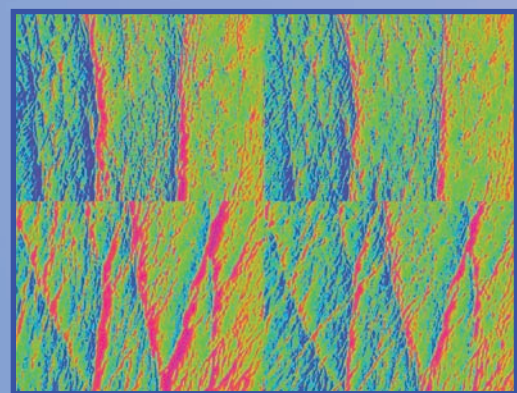
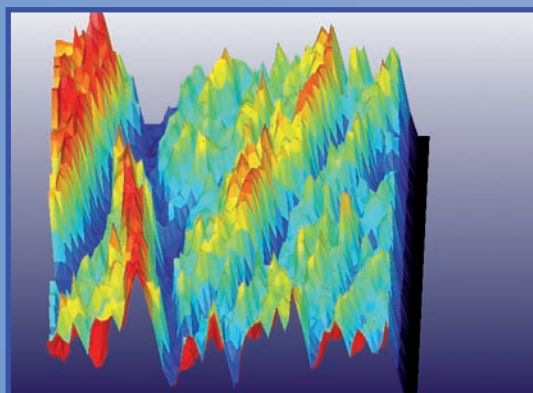
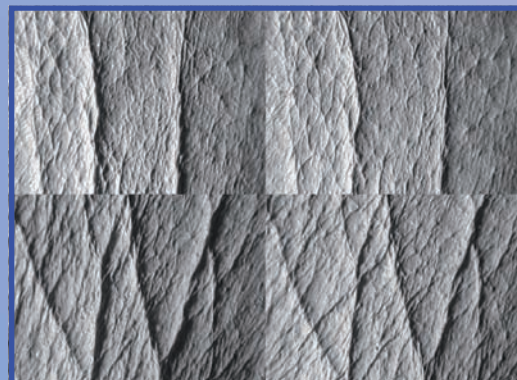
For each study a separate database can be created and all results and settings are automatically saved there. Thus the follow up of each study is very easy. A simple calibration tool enables the user to be sure of the accuracy of distance and depth (x, y, z).

Special image tools as 3D and false colours illustrate the output for marketing purpose.

Additional modules for the software (in future):

Dandruff analysis

Sebum and desquamation with the Sebifix® F 16 and the Corneofix® F 20.



## Technical Data

*Still under development.*

FireWire camera, light source with white light in a 35° angle, mount for the replica.